



HOW IT WORKS

VeinViewer® uses **harmless near-infrared (NIR) light**, and patented technologies to detect subcutaneous blood and create a digital image of the patient's superficial vein pattern projected directly onto the surface of the skin in real time.

Ideal for EMS as well as other alternate care areas, such as surgery and blood/plasma centers and home healthcare, Flex is designed for rapid assessment, durability, and maximum portability.

FAST - PROVEN

BENEFITS

VeinViewer Flex allows the clinician to see through the skin for rapid assessment of veins and choosing the optimal access site.

- See veins **up to 10mm** deep, providing more options for selection of optimal insertion sites
- Effective for patients of **all skin tones, ages and weight**
- Use with **dehydrated patients**, trauma and at night
- **Fully assess** the patient before determining the need for a more invasive procedure; **avoid unnecessary interosseous (IO)** placements and cost
- **Avoid treatment delays** when time is critical



VeinViewer Flex in S-Mount



VeinViewer® Flex shown with Base Accessory Kit: S-Mount (Stability Mount), C-Clamp, Super Clamp, 2 Batteries, Battery Charger, AC Power Adapter, International Power Adapters*, Wrist Strap, Storage Bag, USB Cable; and Optional Accessory Kit: Travel Case, and Car Charge Adapter*.
*Not pictured

EVIDENCE: IMPROVED FIRST ATTEMPTS

PIV Placement	Traditional Method	VeinViewer
First Attempt Success Rate	49%	80%
Mean # of Attempts	1.97	1.29

Peer Review Journal, A Biomedical Device to Improve Pediatric Vascular Access Success

EVIDENCE: INCREASED VENOUS OPTIONS

Dorsum of Hand N=120	Sight + Palpation	VeinViewer	Improvement
Total Veins	5.1	8.2	61%
Optimal Catheter Segments	1.8	2.8	56%

Using VeinViewer To Increase the Identification of Peripheral Intravenous Access Targets in Pediatric Patients

EVIDENCE: IMPROVEMENT IN TIME

Geometric mean time to place PIV, seconds	VeinViewer n=163	Standard n=160	Improvement In Time
0-17 Years Old	132 sec	145 sec	10%
0-2 Years Old	121 sec	167 sec	38%

Peer Review Journal, VeinViewer-assisted Intravenous Catheter Placement in a Pediatric Emergency Department

"We had a pediatric patient who required immediate IV access, and we couldn't visualize or palpate the veins. We brought in the VeinViewer and were immediately able to locate a viable vein for IV access. This technology is a tool we can use to help decrease that trauma [of an IV start] while also helping us to gain IV access quickly and efficiently"

- Angela Krueger, Stanford Children's Hospital

FEATURES

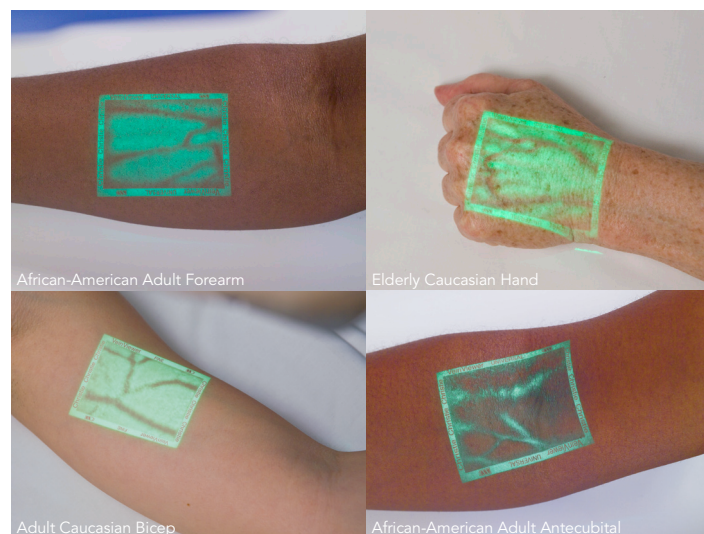
VeinViewer can help the technician find the optimal venipuncture site and avoid potential complications.

- Small size allows for **rapid mobility** and suitability for tight spaces, use at night and across all patient types
- Mounting options provide **hands-free usage**
- **Durable** and easy to use
- **No consumables** and no contact to patient

VeinViewer's exclusive ASSESS™ Imaging Suite:

- MaxBright* – Boosts brightness by another 40% for use in non-standard lighting conditions, delivering the brightest NIR vein illumination device on the market.
- Universal – Useful on all patients.
- Fine Detail*– Ideal for seeing small veins in pediatric.
- Inverse*– Further customize to your preference; very effective for darker skin tones.
- Resize*– Choose 1 of 3 window sizes, a great feature for focusing on smaller appendages of pediatric patients.

*Requires license upgrade



See the VeinViewer difference for yourself. Call today for a free demonstration.

info@veinviewer.com www.veinviewerflex.com

CHRISTIE | 1256 UNION AVENUE MEMPHIS, TN 38104 | 1-877-SEE-VEIN (1-877-733-8346) TOLL-FREE