

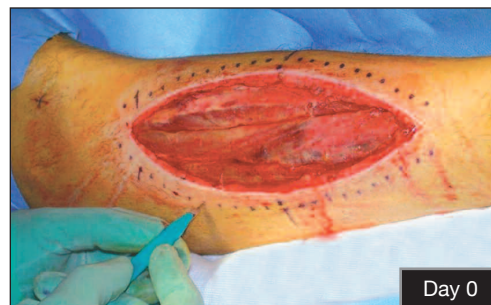
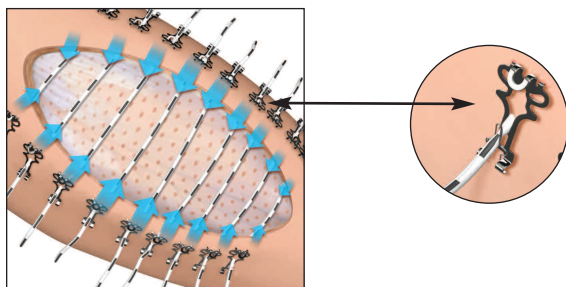
ABRA® Surgical

Managing an open wound means higher healthcare costs

Subcutaneous Traction for Open Wounds

ABRA® Surgical engages full-thickness skin and closes moderate tension, retracted skin defects. A sound primary closure replaces skin grafting and the associated rehabilitation, pain and loss of function.

ABRA® Surgical is indicated for retracted skin defects, fasciotomies, compound fracture wounds and abdominal wounds over mesh or hernia.



Product

Code

ABRA® Surgical Skin Closure Set:

CWK02A

2 x Loop Cannulators; 3 x Lancets

10 packs of:

2 x skin anchors; 1 x 50cm silicone elastomer

Silicone Elastomer

2 x 5-pack 50cm pieces

CZE07

ABRA® Surgical works subcutaneously for added traction, as used for this fasciotomy