

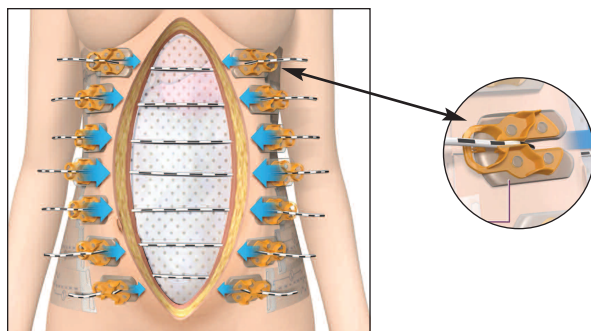
ABRA® Abdominal

A primary closure provides a better quality of life

Open Abdominal Wounds

ABRA® Abdominal restores the primary closure option for full-thickness, retracted mid-line abdominal defects. Installation of the ABRA® system pulls muscle planes and skin together from their lateral retracted state with relentless dynamic appositional traction, leaving the leading edge of the fascial margins undisturbed when performing definitive primary closure.

A full-layer closure restores normal physiology while dramatically reducing length of stay, short-term morbidity risks, and future healthcare costs.



Product

Code

ABRA® Abdominal Wall Closure Set:

CWK08

1x : Surgifish*; 13 hole Elastomer Retainer; Cannulator;
1x regular-size Silicone Sheet; 2x 20-pack Button Tails
10 packs of:
1x 50cm silicone elastomer;
2x button anchors, 2x button tails

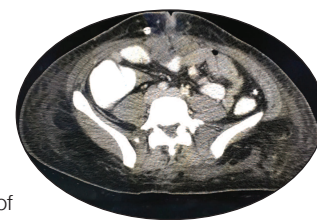
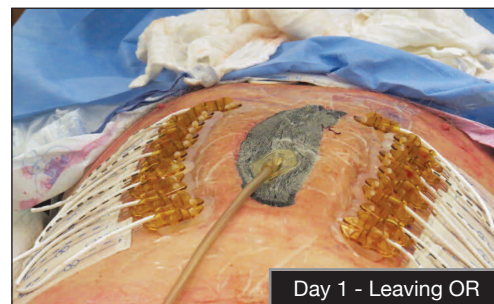
ABRA® Abdominal Wall Closure Set Extension

CWK-EX

1x half-size Silicone Sheet;
3 packs of: 1x 50cm Silicone Elastomer;
2x Button Anchors, 2x Button Tails

Additional kits available, listed on website

* SurgiFish only available in US



A CT scan shows a primarily closed abdomen after use of the ABRA® Abdominal system



www.dynamicissuesystems.com
Southmed Inc., 50 Alliance Blvd., Barrie, ON Canada L4M 5K3

contactus@southmed.com

705-726-9383 1-800-463-7146 Toll free in North America